


—SIDE CHANNELS ALUMINUM
EXTRUSIONS HOUSE FABRIC
SIDE LOCK SYSTEM.
CONTINUOUS BLOCKING REQUIRED
FOR THE ENTIRE SIDE CHANNEL LENGTH

☐ ALL SHOP DRAWINGS, NOTATIONS
AND DIMENSIONS CONTAINED HEREIN
ARE APPROVED FOR FABRICATION
AS NOTED

COMPANY:

REMARKS:

△			
△			
△			
△			
△			
△			
	08/18/16	ISSUED FOR APPROVAL	RC
REV	DATE	REVISION DESCRIPTION	BY

DRAWING CONTENT:
TENSION ZIPPER SHADE

	PROJECT NAME
--	--------------

TZ100

SYSTEM TYPE:

TENSION SYSTEM

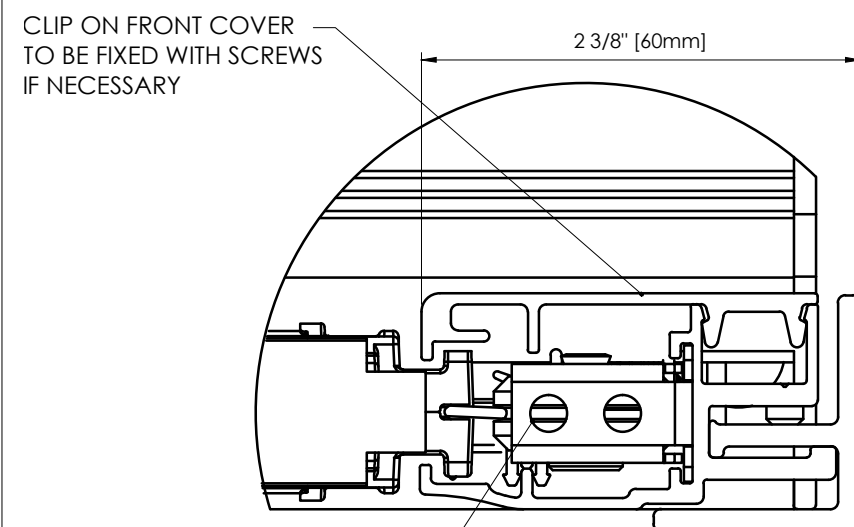
PROJECT NUMBER: 00-000000

DRAWN BY:	DESIGNER	DATE:	MM/DD/YY
-----------	----------	-------	----------

CHECKED BY:	P. MNGR.	DATE:	MM/DD/YY
-------------	----------	-------	----------

DWG NO.

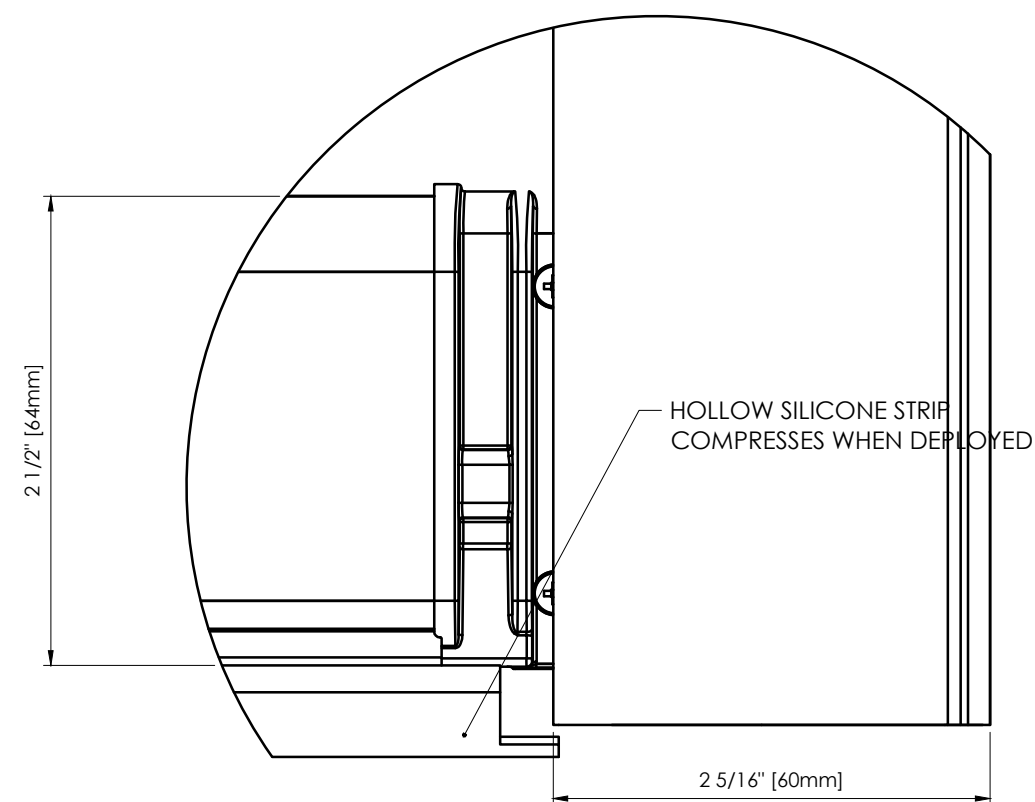
1.00



RETURN PULLEY ASSEMBLY —
TO BE FITTED AT INSTALLATION
THE RETURN PULLEY ASSEMBLY
DOES NOT REQUIRE FIXINGS

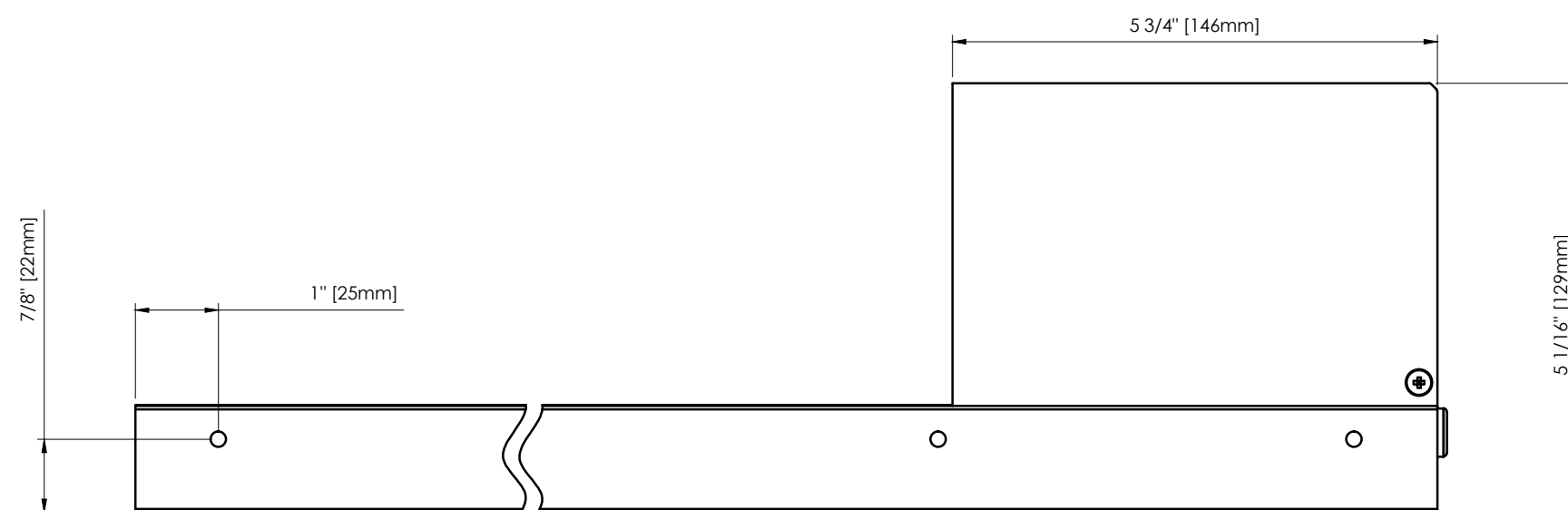
1 SIDE CHANNEL
Scale: 1'-0"=1'-0"

Scale: 1'-0"=1'-0"



2 **HEMBAR**
Scale: 1'-0" = 1'-0"

Scale: 1'-0"=1'-0"



MOUNTING RAIL FIXINGS HOLES SPACED
APPROXIMATE EVERY 15" TO SUIT
SYSTEM SIZE.

3 WALL PLATE FIXING HOLES

Scale: 6'-0"=1'-0"



Scale: 1'-0"=1'-0"

THE MOTOR TUBE ASSEMBLY AND MOUNTING PLATED ARE SUPPLIED LOOSE.



Scale: 1'-0"=1'-0"

☐ ALL SHOP DRAWINGS, NOTATIONS
AND DIMENSIONS CONTAINED HEREIN
ARE APPROVED FOR FABRICATION
AS NOTED

DATE:

COMPANY:

REMARKS:

△			
△			
△			
△			
△			
△			
⚠	08/18/16	ISSUED FOR APPROVAL	RC
REV	DATE	REVISION DESCRIPTION	BY

DRAWN BY:	DESIGNER	DATE:	MM/DD/YY
CHECKED BY:	P. MNGR.	DATE:	MM/DD/YY
DWG NO.			

3.00


☐ ALL SHOP DRAWINGS, NOTATIONS
AND DIMENSIONS CONTAINED HEREIN
ARE APPROVED FOR FABRICATION
AS NOTED

DATE:

COMPANY:

REMARKS:

[illegible]

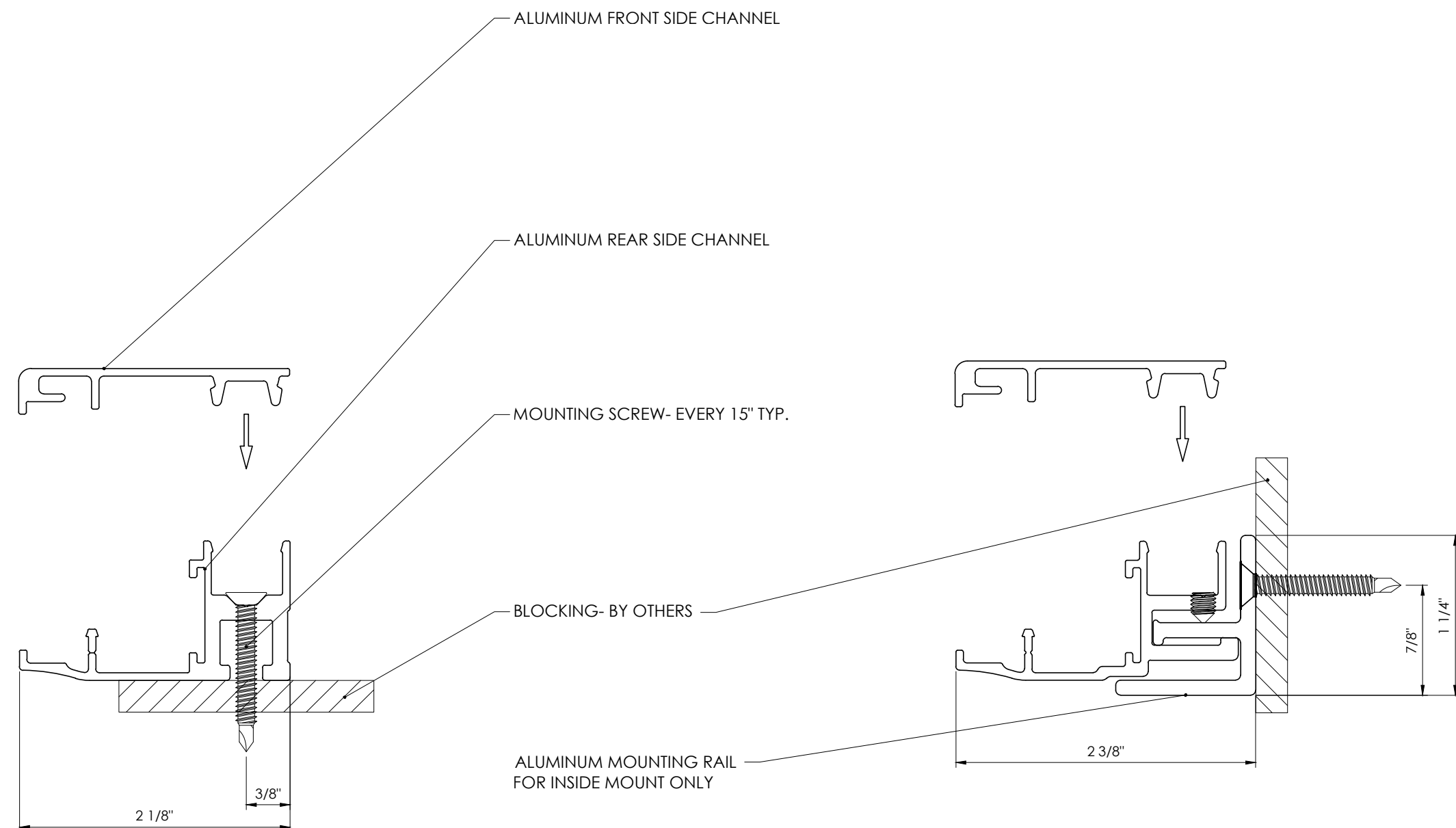
△			
△			
△			
△			
△			
△			
△			
	08/18/16	ISSUED FOR APPROVAL	RC
REV	DATE	REVISION DESCRIPTION	BY

PROJECT NAME: **TZ100**

PROJECT NUMBER: 00-000000

DRAWN BY:	DESIGNER	DATE:	MM/DD/YY
CHECKED BY:	P. MNGR.	DATE:	MM/DD/YY
DWG NO.			

4.00



Scale: 1'-0"=1'-0"

Scale: 1'-0"=1'-0"

NOTE:
CONTINUOUS BLOCKING REQUIRED FOR THE ENTIRE LENGTHS
OF THE SIDE CHANNELS.